

## STOP A FOUR-TONNE FORKLIFT FROM DOING FOUR TONNES OF DAMAGE

Engineered from solid ductile iron and maintenance-free polypropylene, the crash barrier ensures heavy equipment doesn't stand a chance of damaging your customers' walls or facility. Crash barrier is also ideal for creating traffic lanes, framing off areas protecting columns and separating moving equipment from people.

### All-angle protection

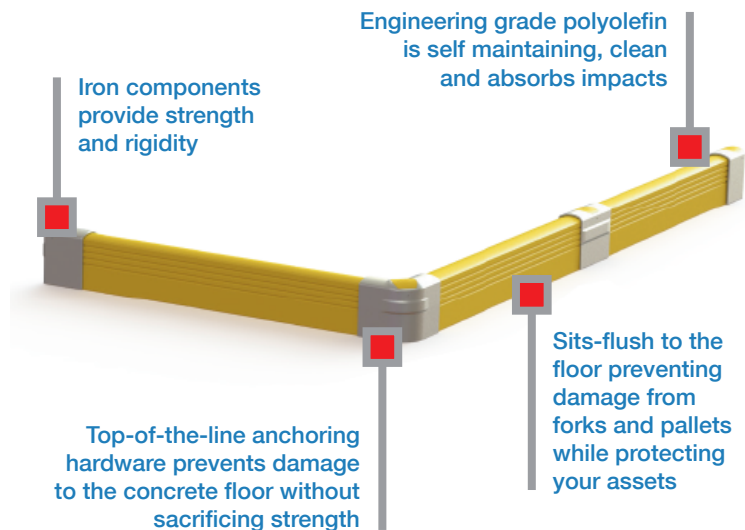
Absorbs direct impacts, deflects glancing blows

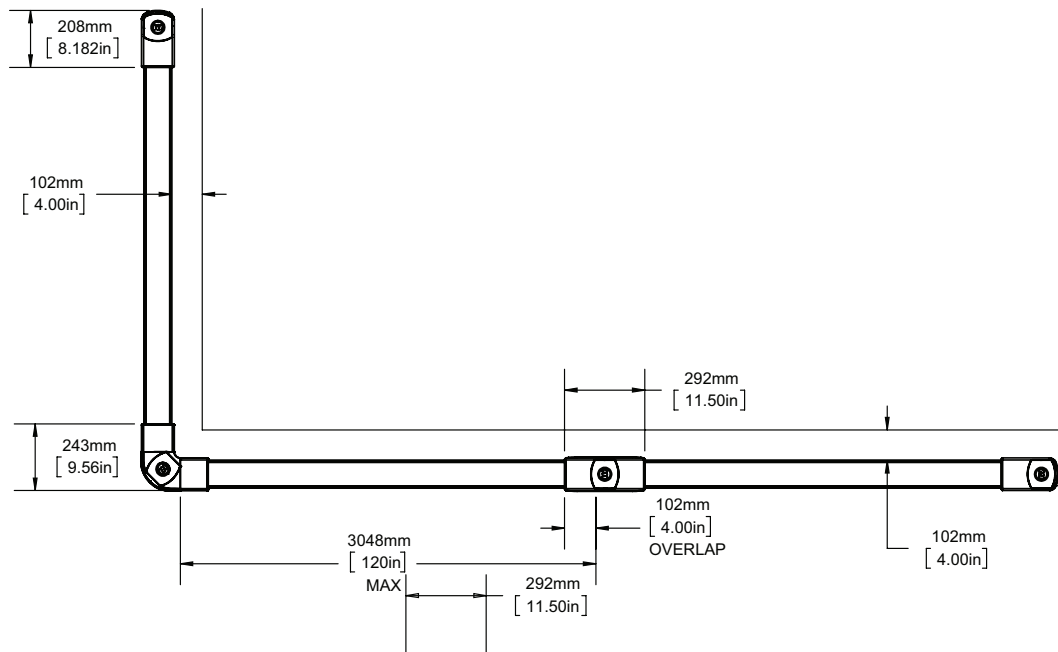
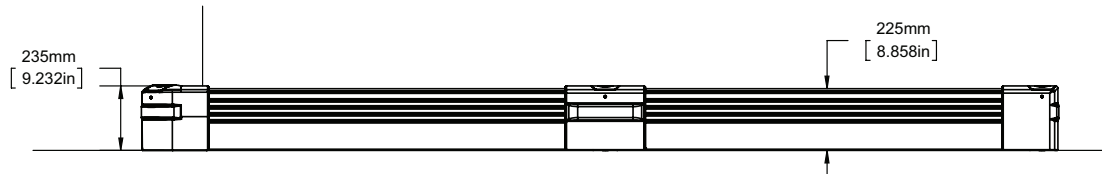
### Zero maintenance

Install it once, peace of mind for years

### High visibility

The best defence is being seen





### CRASH BARRIER END

Materials: Ductile iron end and cap, rubber damper, anchor kit

### CRASH BARRIER MID

Materials: Ductile iron mid and cap, rubber damper, anchor kit

### CRASH BARRIER CORNER

Materials: Ductile iron corner and cap, rubber damper, anchor kit

### CRASH BARRIER POST END

Materials: Ductile iron post end and cap, rubber damper, anchor kit

### BARRIER

Materials: Polyolefin, 10' (3m) length

**Call Us**  
**01925 715761**